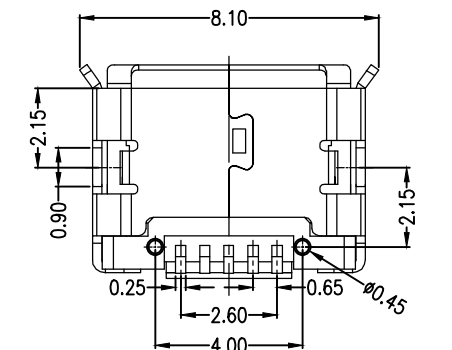


RECOMMENDED PCB LAYOUT



MATERIAL:

Housing: High temperature thermoplastic with g.f UL94V-0
 Contact:copper alloy t=0.20mm
 Shell:Copper alloy t=0.25mm

SPECIFICATION:

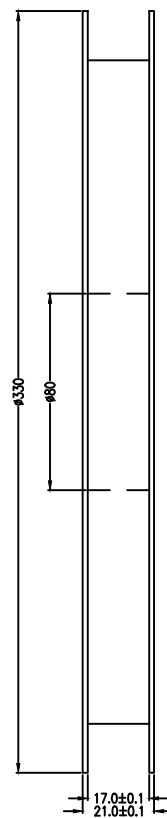
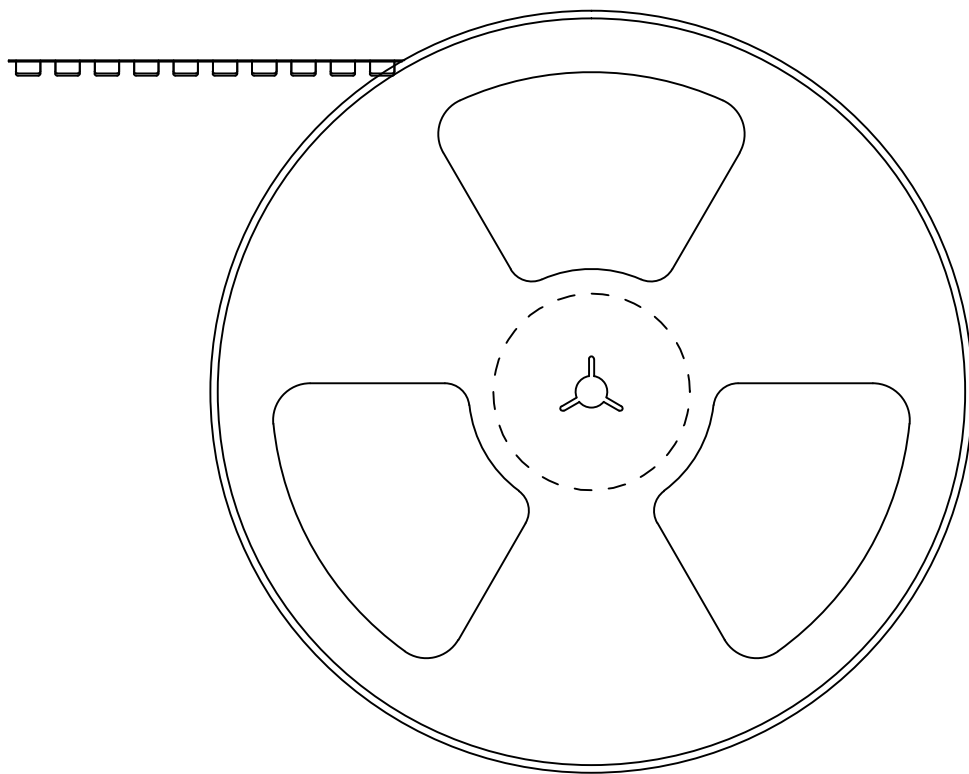
Current rating:1 A Max
 Dielectric withstanding voltage:100 V(ac) FOR 1 Mlin
 Contact resistance:50 MΩ Max
 Insulation resistance: 100 MΩ Min
 Total mating force: 3.57 kgf Max
 Total unmating force: 1.0 kgf Min 0.81~2.05 kgf Min.
 after 10000 insertion/extraction cycles
 Temperature range:-30°C~80°C

Part No: WCT-MCU-03 B F2 05 6 E7 2 3 S 5 E
 1 2 3 4 5 6 7 8 9 10 11

- 1.Products : MCU=MICRO USB
- 2.Type : B=B Type
- 3.Specification : F2=Female To Board
- 4.Pin No.:05=5Pin
- 5.Plastic Material:6=LCP
- 6.Mounted : E7=DIP Shell Foot=5.65mm Pin SMT With Curl
- 7.Shell Material : 2=C2680
- 8.Plastic Color : 3=Black
- 9.Contact plating : S=Gold Flash
- 10.Packing : 5=Reel
- 11.Environmental Options : E=RoHS(Bright)



<i>Title</i>	Micro USB B Type Female 5P SMT 90° With Curl					
<i>Tolerances</i>	<i>Drawer</i>	<i>Naomi</i>	<i>Part No:</i>			
<i>Linear</i>	<i>Checked</i>	<i>Summer</i>	WCT-MCU-03BF2056E723S5E			
X ±0.15	<i>Approved</i>	<i>Macus</i>	<i>Cus. Part No:</i>			
.X ±0.05	<i>Date</i>	2017.07.09	WCT-MCU-03BF2056E723S5E			
<i>Angles</i>	<i>Projection</i>	<i>Version</i>	<i>Size</i>	<i>A4</i>	<i>Units</i>	<i>mm</i>
± 3°		A	<i>Scale</i>	1:1	<i>Sheet</i>	1/2



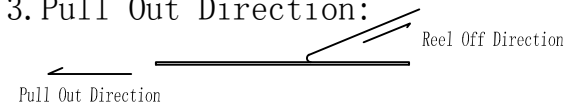
Note:

1. Packing quantity: 1000Pcs/盘, 10盘/箱

2. Lead Tape Length:



3. Pull Out Direction:



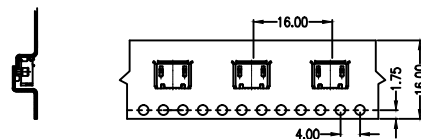
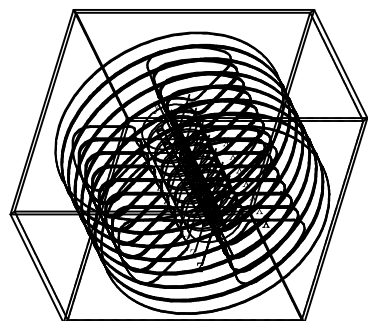
4. Material:


Carrier Tape: Polypropylene

Top Tape: Polyester, Polyethylene

Reel: Polystyrene

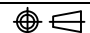
纸箱规格: 360*360*220





允禄科技有限公司

WINCONN TECHNOLOGY CO., LTD.

<i>Title</i>	Micro USB B Type Female 5P SMT 90° With Curl					
<i>Tolerances</i>	<i>Drawer</i>	<i>Naomi</i>	<i>Part No:</i>			
<i>Linear</i>	<i>Checked</i>	<i>Summer</i>	WCT-MCU-03BF2056E723S5E			
<i>X ±0.15</i>	<i>Approved</i>	<i>Macus</i>	<i>Cus. Part No:</i>			
<i>.X ±0.05</i>	<i>Date</i>	2017.07.09	WCT-MCU-03BF2056E723S5E			
<i>Angles</i>	<i>Projection</i>	<i>Version</i>	<i>Size</i>	<i>A4</i>	<i>Units</i>	<i>mm</i>
± 3°		A	<i>Scale</i>	1:1	<i>Sheet</i>	2/2